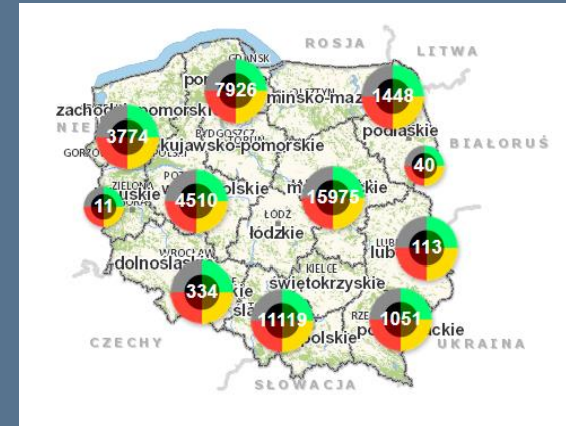




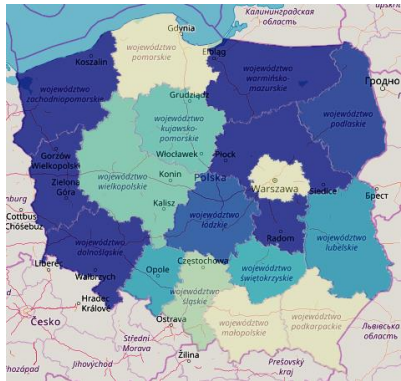
Ministry of the Interior and Administration

Examples of building
foundations for
administrative approach
to organised crime
in Poland

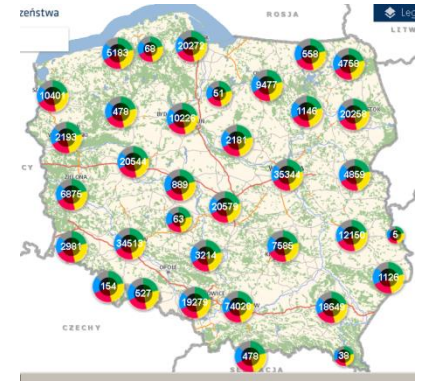




National Security Threats Map as a way of sharing the information



National Security Threats Map



Statistical part

Police statistics regarding crimes, interventions, traffic incidents and public opinion polls



Interactive part

The possibility of anonymous indication of a threat and its localisation by local inhabitants

Categories of entries



Acts of vandalism



Unauthorized swimming/bathing areas



Illegal waste dumps



Grouping of minors endangered by demoralisation



Poaching



Dangerous near water areas



Dangerous places in waters



Homeless person needing help



Beggary



A place of dangerous entertainment activity



Illegal logging/deforestation



Illegal car races



Incorrect car parking



Unsecured railway foot crossings



Unsecured railway road crossings



Inappropriate traffic infrastructure



Devastation of greenery/plants



Incorrect traffic organisation



Driving quads in forests



Exceeding speed limit



Drinking alcohol in prohibited areas



Drownings



Use of intoxicants



Wandering homeless dogs



Burning grasslands



Traffic accidents with wild animals



Cruelty to animals

Categories of entries



Acts of vandalism



Unauthorised swimming/bathing areas



Illegal waste dumps



Grouping of minors endangered by demoralisation



Poaching



Dangerous near water areas



Dangerous places in waters



Homeless person needing help



Beggary



A place of dangerous entertainment activity



Illegal logging/deforestation



Illegal car races



Incorrect car parking



Unsecured railway foot crossings



Unsecured railway road crossings



Inappropriate traffic infrastructure



Devastation of greenery/plants



Incorrect traffic organisation



Driving quads in forests



Exceeding speed limit



Drinking alcohol in prohibited areas



Drownings



Use of intoxicants



Wandering homeless dogs



Burning grasslands



Traffic accidents with wild animals



Cruelty to animals

Phenomena that could potentially be related to criminal activities ???



Acts of vandalism



Unauthorised swimming/bathing areas



Illegal waste dumps



Grouping of minors endangered by demoralisation



Poaching



Dangerous near water areas



Dangerous places in waters



Homeless person needing help



Beggary



A place of dangerous entertainment activity



Illegal logging/deforestation



Illegal car races



Incorrect car parking



Unsecured railway foot crossings



Unsecured railway road crossings



Inappropriate traffic infrastructure



Devastation of greenery/plants



Incorrect traffic organisation



Driving quads in forests



Exceeding speed limit



Drinking alcohol in prohibited areas



Drownings



Use of intoxicants



Wandering homeless dogs



Burning grasslands



Traffic accidents with wild animals



Cruelty to animals

Dishonest company won the public tender?

Victims of human trafficking?

The area of operation of organized drug groups?

ELEMENTS OF EFFECTIVE MANAGEMENT OF THE NATIONAL SECURITY THREATS MAP



The lack of one element may result in a failure of the project

Aims of the National Security Threats Map

- active participation of the society in actions taken for security;
- limiting the occurrence of threats in public areas;
- raising citizens sense of security;
- optimisation of the use of Police forces and resources;
- increasing of the effectiveness of Police actions;
- partnership of the Police with citizens in the area of solving local problems;
- adjustment of Police structures to present threats – reactivation of inactive Police stations.

Examples of functioning of the National Security Threats Map

- improvement of road traffic safety;
- actions aimed at elimination of common phenomena i.e. drinking alcohol in prohibited areas or acts of vandalism;
- taking up actions aimed at protection of vulnerable persons i.e. beggars, homeless or minors endangered by demoralisation;
- **up-to-date information about present threats.**

**Key to applying the
administrative
approach!!!**

National Security Threats Map in numbers

**Key to applying the
administrative
approach!!!**

Number of threats indicated – **1 405 811**
of which 51% were confirmed

Number of threats transferred outside the Police
– **5 130**

Data from 30.06.2016 to 7.02.2020

Number of users – **2 073 603**

Number of openings – **7 001 150**

Number of openings
of the statistical part – **153 262**

Data on 7.02.2020



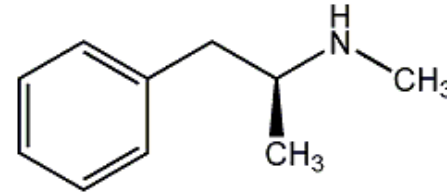
<https://mapy.geoportal.gov.pl/iMapLite/KMZBPublic.html>



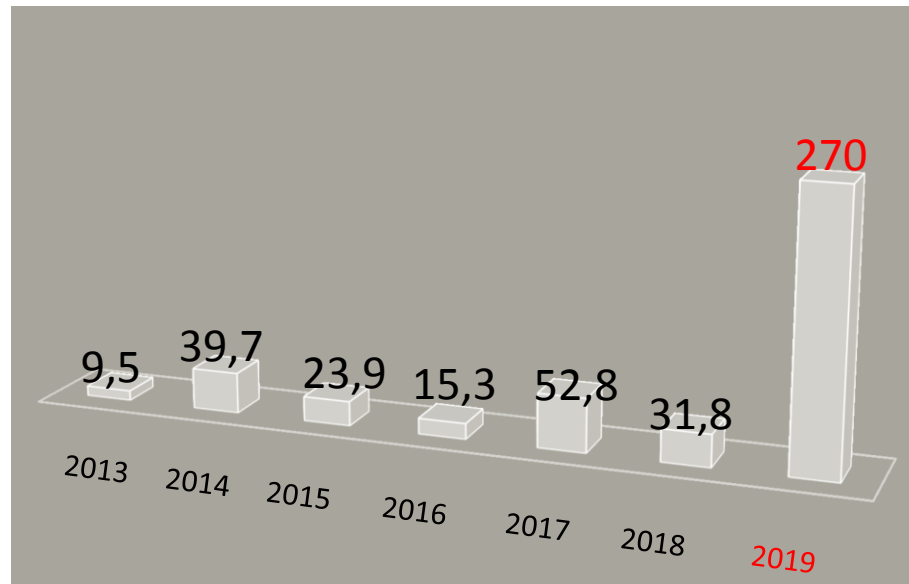
Planned legislative initiative in the area of counteracting drug crime as an example of an administrative approach

➤ Problem:

The use of tablets with pseudoephedrine for production methamphetamine



Statistics on the confiscation of methamphetamine by the Police in Poland in kilos
The so-called waterbed effect after introducing new regulations
in the Czech Republic



Methamphetamine precursors

The most used:

- Ephedrine
- Pseudoephedrine
- Phenyl 2 Propanone (P-2-P = BMK)

Source of (pseudo)ephedrine

- **Extraction from tablets (uncontrolled product)**
- Smuggling in pure form from China, India (controlled substance)

Source of BMK

- smuggling, illegal production

To produce **1000 g** of methamphetamine approx. **1600g pseudoephedrine** is needed:

- **13 thousands / 26 thousands tablet pieces**
- **2,200 drug packages** (e.g. CIRRUS)

Approx. **22 medicine packages** are needed to produce **10g of methamphetamine**



Poland indicated as the main source of tablets with pseudoephedrine

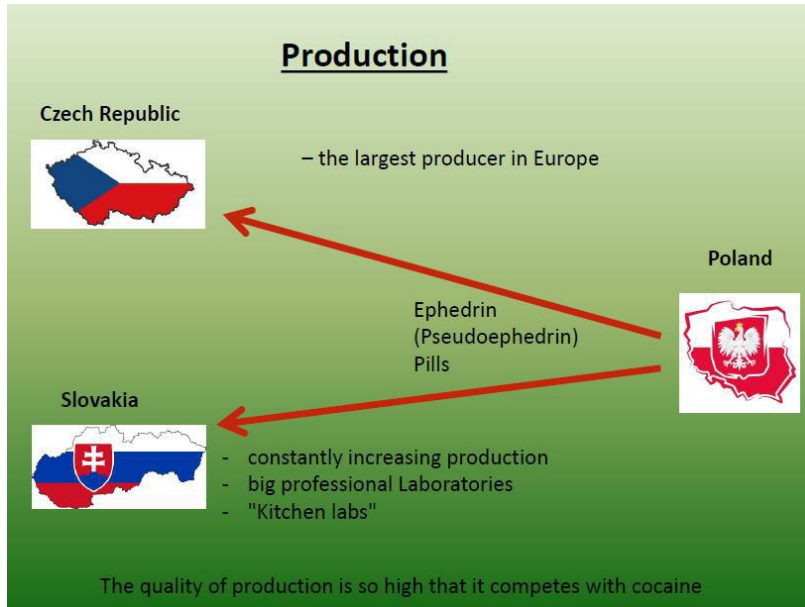


Figure 6.5

Location of sites related to methamphetamine production in the EU, 2015-17



Steps to effective administrative barrier

- **2015**

The amendment to the Act on counteracting drug addiction and the Act on pharmaceutical law – since July 2015, you can only buy one packet of tablets containing pseudoephedrine, dextromethorphan or codeine in one transaction

- **2017**

Since January 2017 the total content of pseudoephedrine in one package cannot be higher than 720 mg

BUT:

No criminal provisions in the case of removal of medicines with pseudoephedrine from warehouses and a very low penalty for placing them on the market – from a fine to a maximum of 2 years imprisonment even for actions on a scale of millions of packages.

Reaction from organized crime groups?

- **each package on separate receipt**
- **hundreds of thousands of purchased packages**
- **involvement in the activities of pharmaceutical wholesalers and pharmacies**

Steps to effective administrative barrier

- 20....??

The legislative solution similar to Czech Republic is under preparation with the leading role of the Minister of Health.

Since July 1, 2018 and currently you can sell / dispense medication with content of pseudoephedrine in Czech pharmacies only through the Limited Medicines Register.

A maximum of 900 mg pseudoephedrine can be sold / spent (one packaging of medicines containing 30 mg of PSE in one tablet) to one person during a period of seven consecutive days.

A person shows his own ID card when buying medicines which contains pseudoephedrine.

In Poland, since April 2019, there has been an Integrated Monitoring System for Trading in Medicinal Products, run by the Main Pharmaceutical Inspector - a change in its functionality is planned in the scope of enabling monitoring of the so-called PESEL (personal identification number) of people who buy medicines with pseudoephedrine, the duration of the treatment will be limited to 7 days.



Ministry
of the Interior
and Administration

Thank you for your attention